

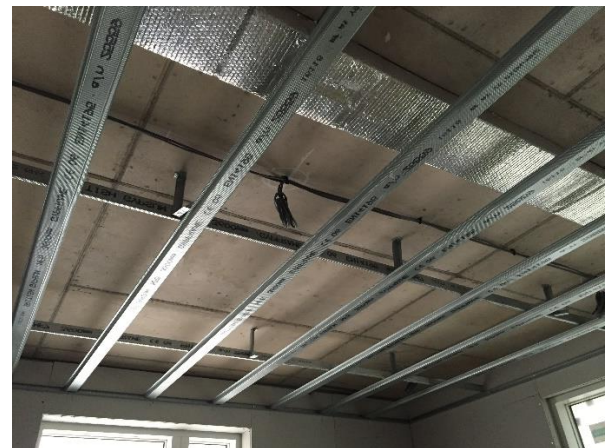
Site Progress

Since the May newsletter a number of significant milestones have been reached on site:

- The RC frame is complete to all three blocks. The final slab pour took place on 6th June 2016.
- Screeding began on 25th May in Block A and is now occurring weekly in Block A and B with C due to begin in July.
- 1st fix mechanical and electrical have started with one floor already complete in Block A.
- We have windows installed up to Level 6 in Block A, Level 4 in Block B and Level 2 in Block C.
- All three hoists are now in operation.

What is next?

Over the next few weeks we will begin closing up apartments (walls and ceilings) in blocks A and B ready for our tilers to start in July. On the outside of the blocks our façade contractors will continue to work their way up all three buildings with the final window installations expected to take place at the end of June 2016 and the brickwork due to complete in early August 2016.



Considerate Constructors Visit – 28th April 2016

Checklist section	1 st visit	2 nd visit	Score descriptor
1. Care about Appearance	9	9	/10
2. Respect the Community	8	9	/10
3. Protect the Environment	8	9	/10
4. Secure everyone's Safety	9	9	/10
5. Value their Workforce	8	9	/10
Total score	42	45	/50

For more information on score descriptors, see 'Site Scoring Explained' or visit www.ccscheme.org.uk

Heritage Walk Complaints Procedure

To notify St James of any issues please contact:

John Browning (Project Manager) or John Morris (Site Manager)

Email: Siteoffice@heritagewalk.co.uk

Tel: 0208 232 2600

Considerate Constructors tel: 0800 783 1423

HERITAGE WALK SITE TEAM

John Browning – Project Manager

John Morris – Senior Site Manager

Stewart Rae – Site Manager

Sean Greene – Site Manager

Rachel Darvall – Assistant Site Manager

Helen Cummins – Technical Manager

Tristram Taylor – Technical Co-ordinator

Shahrier Chowdhury – Technical Co-Ordinator

Joe O'Regan – Senior Surveyor

David George – Quantity Surveyor

Aileen Stokoe – Site Secretary

St James
Designed for life



Heritage Walk is a stunning collection of 74 private suites, one, two and three bedroom apartments and 17 shared ownership apartments together with commercial space for local businesses, all within landscaped grounds. This unique development unites contemporary living space with a heritage setting. Situated adjacent to St James's Kew Bridge West, the development incorporates courtyard gardens on elevated terraces and benefits from a concierge, residents gym and gated undercroft parking.

Located close to the Grade II listed Steam and Water Museum, with the magnificent Kew Gardens minutes away and within easy reach of Central London, Heritage Walk offers London village living with access to world class parks and open spaces.



www.facebook.com/heritagewalktw8

June 2016